

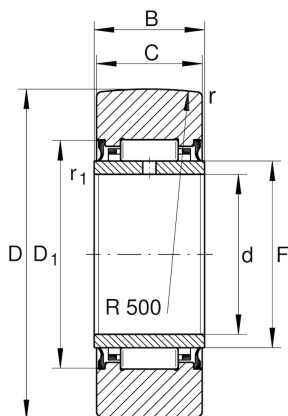
NA2207-X-2RSR

Yoke type track roller

Schaeffler ID:
0007105040000

Yoke type track rollers NA22...-2RSR,
without axial guidance, lip seals on both
sides

Technical information



Main Dimensions & Performance Data

D	72 mm	Outside diameter
F	42 mm	Raceway diameter inner ring
C	22.7 mm	Width, outer ring
$C_{r w}$	21,500 N	Basic dynamic load rating, radial
$C_{0 r w}$	36,500 N	Basic static load rating, radial
$C_{u r w}$	5,300 N	Fatigue load limit, radial
$n_{D G}$	1,100 1/min	Speed on permanent grease lubrication
	0.412 kg	Weight

Dimensions

d	35 mm	Bore diameter
B	23 mm	Width, inner ring
$D_{1 \min}$	50 mm	Minimum mounting dimension
r_{\min}	1.1 mm	Minimum chamfer dimension
$r_{1 \min}$	0.6 mm	Minimum chamfer dimension
R	500 mm	Radius of outer ring outside profile